



SwingerViewer

User Handbook



Contents

1. Introduction.....	3
1.1 SwingerViewer.....	3
1.2 Swinger LessonViewer	3
1.3 Versions	3
1.4 Support	3
2. SwingerViewer (Video Files).....	4
2.1a Downloading Instructions	4
2.1b Launching SwingerViewer from a SwingerViewer CD	4
2.2 Computer Requirements	5
2.3 Video Display Requirements	5
3. Toolbar Functions	6
4. Menu Commands.....	8
4.1 File Menu	8
4.2 Video Menu	8
4.3 Help Menu	9
5. Playing Video	10
5.1 Play Bar	10
5.2 Additional Video Control Options	10
6. Keyboard Short-cuts	11
6.1 General Short-cuts	11
6.2 Right-Mouse Functions.....	11
7. Swinger LessonViewer (Lesson Files .LES)	13
7.1a Downloading Instructions	13
7.1b Launching Swinger LessonViewer from a SwingerViewer CD	13
7.2 Computer Requirements	14
7.3 Video Display Requirements	14
8. Playing Lesson Files	15
8.1 Lesson Files	15
8.2 Opening Lesson Files.....	15
8.3 LessonViewer Controls.....	15
9. Menu Commands.....	17
9.1 File menu.....	17
9.2 Help menu	17
10. Video Compressors.....	18
10.1 Indeo 5.11	18
10.2 DivX	18

1. Introduction

1.1 SwingerViewer

SwingerViewer is a video playing application designed to play video files that have been created in a Webbsoft Technologies product. It will display all graphics and text added to a video clip. SwingerViewer incorporates a play engine capable of displaying high quality, full resolution video.

1.2 Swinger LessonViewer

Swinger LessonViewer is an application designed to play Lesson files (.LES) created using Lesson Mode in either SwingerTeacher or SwingerPlus. It will display the entire content of the lesson including the video files and window arrangement used, any graphics and text added during recording as well as the mouse movements and audio commentary if they were recorded.

1.3 Versions

Both the SwingerViewer and the Swinger LessonViewer are available in two forms. They will either be provided on a CD or you will have downloaded them from our website. There are only minor differences between the two versions. These differences are highlighted throughout this document.

1.4 Support

Please note that SwingerViewer is primarily designed to display .AVI files create in other Webbsoft applications. Performance of other video file types may not be as reliable.

If you have any questions regarding either the SwingerViewer or Swinger LessonViewer, please email your enquiry to support@webbsoft.biz.

This help section is divided into two sections; SwingerViewer and Swinger LessonViewer. To jump to the Swinger LessonViewer section, [click here...](#)

2. SwingerViewer (Video Files)

The SwingerViewer is a video playing application designed to play video that has been created in a Webbsoft Technologies product.

2.1a Downloading Instructions

If downloading from the link on the SwingerViewer web page, click the button labelled "Download SwingerViewer". When you do this you will be prompted with the following dialog box...



You should select to SAVE the file into a NEW folder on your computer.

Once downloaded, double-click the file to launch the SwingerViewer application.

2.1b Launching SwingerViewer from a SwingerViewer CD

When launched from the SwingerViewer CD, SwingerViewer checks the CD to see if video files have been added to it. If video files are found on the CD, SwingerViewer will ask you whether you would like to copy the video files to your computer. (Video will nearly always play better from a computer's hard disk than from a CD.)

If you select to COPY, SwingerViewer will look at the dates the video files were created and create a new folder based on the date of the most recent video file. The name of the folder will be yyyy-mm-dd (e.g.. 2002-11-21 is the 21st November, 2002). If the folder already exists on the computer the video clips will not be copied.

The default path to the new folder is "C:\Videofiles\SwViewer". This can be changed when the SwingerViewer is first launched on the computer. After the new folder is created the video files will be copied into it.

After the files have been copied, the File Open dialog box will be displayed, and the files

will appear in the new folder. If video files are not copied (i.e. they have been previously copied to the hard disk) the SwingerViewer will open the File Open dialog box at the folder where the video clips are located.

Notes:

1. The SwingerViewer CD should run automatically when it is inserted into your computer's CD or DVD drive. If it does not auto run, then the Windows AutoPlay setting may need to be changed. The CD can also be run by double-clicking on the "autorun.exe" file on the CD or on your CD drive in "My Computer" or "Windows Explorer"
2. Any copy of SwingerViewer provided on a SwingerViewer CD can only be launched from the CD.

2.2 Computer Requirements

The processing and display of video on a computer is a resource intense activity. The demands on the computer increase substantially as the resolution of the video or the size of the displayed image increases. The following computer specification is recommended:

- Pentium 3 - 800 MHz processor (or equivalent)
- 128 Mbytes of RAM

2.3 Video Display Requirements

SwingerViewer will work with any available screen resolution. To get the most out of the program a minimum screen size of XGA (1024 x 768) is preferable. The colour palette of the display should be set to 16 bit or higher. SwingerViewer will not operate correctly with 256 or less colours.

3. Toolbar Functions



Opens the File Open dialog box. Use this to find video files you wish to view.



Gives a list of zoom options to enlarge or reduce the size of the video.



Flips the image horizontally so that left-handers become right-handers etc.



Rotates the image 90 degrees clockwise. This is used if the camera was rotated when the video was shot.



Rotates the image 90 degrees anti-clockwise. This is used if the camera was rotated when the video was shot.



Displays only the Odd fields from an interlaced video clip.



Displays only the Even fields from an interlaced video clip

D

Displays the Odd fields followed by their corresponding Even fields from an interlaced video clip. This doubles the frame rate to 50 fps (PAL) or 60 fps (NTSC)



Displays a dialog to adjust the normal and slow play speeds.



Displays any graphics or text that have been added to the video clip.



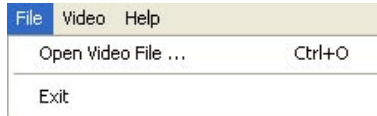
Displays any comments that have been added to the video clip



Displays the video in full screen mode. Press the Esc key on the keyboard to return to normal mode or alternatively click the right mouse button and select Normal Screen Size. When you are in the full screen mode, to play the video, click on the right mouse button and choose Play or Play Slow. To stop the video in full screen mode, right click the mouse and choose Stop. You can also view the video properties in the same list.

4. Menu Commands

4.1 File Menu



Open Video File...

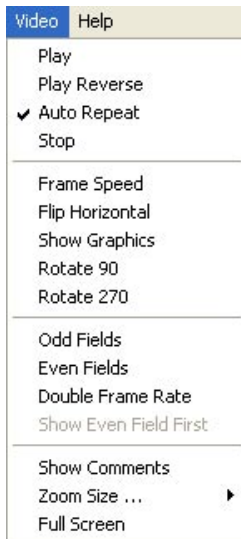
When selected this shows the File Open dialog box, enabling navigation to video files.

Exit

This option terminates the SwingerViewer application.

The file menu also contains a list of the four most recent video clips that have been opened. Any of these files can be opened by clicking on them in the list.

4.2 Video Menu



The video menu contains sub-menu items to change the way that the video is displayed. All of these except Auto Repeat and Show Even Field First have a tool bar icon which performs an identical function.

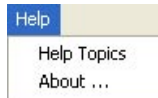
Auto Repeat

This function re-plays the video clip when it gets to the end.

Show Even Field First

When video is shot using a camera which employs interlaced scanning, the Odd field is normally shot first. On rare occasions, the Even field is shot first. The Show Even Field First function caters for this by reversing the normal order for displaying the Odd and Even fields.

4.3 Help Menu



Help Topics

Provides access to the help file. Note that for the Downloaded version of SwingerViewer, you will be directed to access the help file from the SwingerViewer web page.

About...

Provides version and contact information.





5. Playing Video

Video can be played and manipulated by using the Play Bar, the keyboard Left and Right arrow keys or by right clicking the mouse button and clicking Play, Play Slow or Stop.




5.1 Play Bar



The Play Bar functions control the various play modes for the video.

-  Plays the video in reverse at normal speed
-  Plays the video backwards in slow motion
-  Moves the video backward one frame
-  Stops the video at its current position.

If clicked a second time the video clip returns to the first frame.

-  Moves the video forward one frame
-  Plays the video forwards in slow motion
-  Plays the video forwards at normal speed

When playing video it will automatically repeat if the [Auto Repeat](#) option is selected in the [Video](#) menu.

5.2 Additional Video Control Options

As well as using these controls, the video can be advanced to any particular frame by the following methods:

- i) Pressing the Left or Right arrow keys on the computer keyboard moves the video backwards or forwards one frame at a time. If the keys are held down the video will play in slow motion.
- ii) Dragging the slider control at the top of the video window.
- iii) Clicking on the left or right arrow buttons at the ends of the slider.
- iv) Rotating the mouse wheel whilst the mouse pointer is positioned over the video window.

6. Keyboard Short-cuts

6.1 General Short-cuts

Selected functions in SwingerViewer have short-cuts associated with them.

- Ctrl + o** file open
- Ctrl + 1** zoom to 100%
- Ctrl + 2** zoom to 200%
- Ctrl + 3** zoom to 300%
- Ctrl + 4** zoom to 400%
- Ctrl + m** zoom to maximum size
- Ctrl + f** toggles between full screen and normal screen sizes

6.2 Right-Mouse Functions

There are a number of functions available by right mouse clicking in a video window. When you right mouse click on an open video file, the following dialog box is displayed.



Play

'Play' plays the video clip in full speed. If you right click again whilst the video is playing, the Stop function becomes enabled.

Play Slow

'Play Slow' plays the video clip in slow-motion.

Stop

'Stop' stops the video.

Full Screen (Normal Screen)

Removes the tool bars and SwingerPro application window to show only the video clip. The actual size of the video image will depend on your monitor and screen settings. To

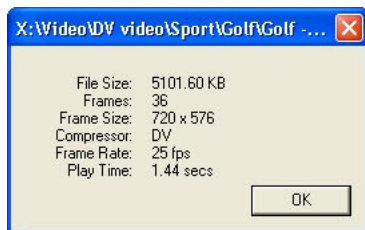
return to Normal Screen mode:

- Right mouse click and select Normal Screen Size from the options
- press the Esc key.

Note: The four most recent files which have been opened in SwingerViewer will be listed between Full Screen and Properties. These files can be opened by clicking on their name in the list.

Properties

This option displays a dialog box containing the properties of the video file.



7. Swinger LessonViewer (Lesson Files .LES)

Swinger LessonViewer is an application designed to play Lesson files (.LES) created using Lesson Mode in either SwingerTeacher or SwingerPlus.

7.1a Downloading Instructions

If downloading, from the link on the SwingerViewer web page, click the button labelled "Download Swinger LessonViewer". When you do this you will be prompted with the following dialog box...



You should select to SAVE the file into a NEW folder on your computer.

Once downloaded, double-click the file to launch the Swinger LessonViewer application.

7.1b Launching Swinger LessonViewer from a SwingerViewer CD

When launched from the CD, Swinger LessonViewer checks the CD to see if video files have been added to it. If lesson files are found on the CD, Swinger LessonViewer will ask you whether you would like to copy the lesson files to your computer. (Lesson files will nearly always play better from a computer's hard disk than from a CD.)

If you select to COPY, Swinger LessonViewer will look at the dates the lesson files were created and create a new folder based on the date of the most recent video file. The name of the folder will be yyyy-mm-dd (e.g.. 2002-11-21 is the 21st November, 2002). If the folder already exists on the computer the video clips will not be copied.

The default path to the new folder is "C:\Videofiles\SwViewer". This can be changed when the SwingerViewer is first launched on the computer. After the new folder is created the video files will be copied into it.

After the files have been copied the File Open dialog box will be displayed, and will display the files in the new folder. If lesson files are not copied (i.e. they have been

previously copied to the hard disk) the Swinger LessonViewer will open the File Open dialog box at the folder where the lesson files are located.

Notes:

1. The SwingerViewer CD should auto run when it is inserted into a computer. If it doesn't auto run, then the Windows AutoPlay setting may need to be changed. The CD can also be run by double-clicking on the "autorun.exe" file on the CD or on the CD drive in "My Computer" or "Windows Explorer"
2. Swinger LessonViewer provided on a SwingerViewer CD can only be launched from the CD.

7.2 Computer Requirements

The processing and display of video on a computer is a resource intense activity. The demands on the computer increase substantially as the resolution of the video or the size of the displayed image increases. It is strongly recommended that as much computer power as possible be used to run the program. The following computer specification is recommended:

- Pentium 3 - 800 MHz processor (or equivalent)
- 128 Mbytes of RAM

7.3 Video Display Requirements

The program will work with any available screen resolution. To get the most out of the program a minimum screen size of XGA (1024 x 768 pixels) is preferable. The colour palette of the display should be set to 16 bit or higher. Swinger LessonViewer will not operate correctly with 256 or less colours.

8. Playing Lesson Files

8.1 Lesson Files

A Lesson file is a special composite file that contains the interaction between a coach and a student during a coaching session. It can contain a number of video files, a coach's voice commentary, and the detailed history of what the coach did during the coaching session.

8.2 Opening Lesson Files

To open a Lesson file select Open Lesson File from the File menu. A File Open dialog box, allowing navigation to Lesson files. Select the file you wish to Open and click Open.

8.3 LessonViewer Controls

The controls for playing Lesson files are located at the bottom of the LessonViewer.



Playing a Lesson

To play a Lesson file click on the Play button with the mouse.



Stopping a Lesson

To stop a lesson click on the Stop button with the mouse.



Return to the beginning of a Lesson

To return to the beginning of a Lesson click on the Return button.



Using the Lesson Slider

As a Lesson plays the slider moves to represent the progress of the Lesson. Dragging the slider to the right with the left mouse button will advance the Lesson and dragging the slider to the left will move the Lesson backwards. Using the Lesson slider in this way makes it easy for the user to locate a section of the Lesson, or to repeat a section of it.





The Time Indicators



To the right of the Play button are two time indicators. The one on the left indicates the current time of the opened Lesson and the one on the right indicates the length of the Lesson.

Voice Commentary

A voice commentary that has been added to a Lesson file can be activated or muted by clicking on the speaker icon.

The icon will change from  to .

Commentary Volume

The volume of the commentary can be adjusted by dragging the volume slider with the mouse.



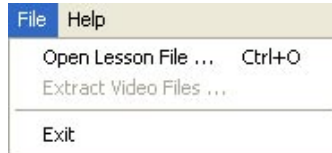
Opening other Lesson Files

When the LessonViewer is open, Lessons can be opened by clicking on the File Open icon on the right hand side of the LessonViewer controls.



9. Menu Commands

9.1 File menu



Open Lesson File...

When selected this shows the File Open dialog box, enabling navigation to video files.

Extract Video Files

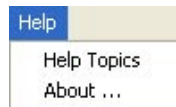
When selected, this options allows you to extract the video files from a lesson file. Where a lesson contains multiple video files you will be prompted with a list of the video files which you can then elect to save.

Exit

This option terminates the Swinger LessonViewer application.

The file menu also contains a list of the four most recent lesson files that have been opened. Any of these files can be opened by clicking on them in the list.

9.2 Help menu



Help Topics

Provides access to the help file. Note that for the downloaded version of Swinger LessonViewer, you will be directed to access the help file from the Swinger LessonViewer web page.

About...

Provides version and contact information.

10. Video Compressors

Applies to: SwingerViewer and Swinger LessonViewer

When video files are created a video compressor (often called a video codec) will be employed to reduce the size of the file. Before video can be played on a computer the video codec that created the file must be installed in the computer. Some video codecs are installed when the Windows operating system is installed. If an "Unrecognized Video Format" message is received when trying to open a video clip, the correct compressor is not installed on the computer. The SwingerViewer CD has two common video compressors on it. These are contained in the Resources folder of the CD.

10.1 Indeo 5.11

The set up file for this compressor is called "iv5setup.exe"

10.2 DivX

The set up file for this compressor is called "DivX505Bundle.exe" or "DivX511Bundle.exe".

If the problem persists after these compressors are installed, you will have to refer to the person who created the file to determine exactly what compressor was used.

If you have downloaded SwingerViewer or Swinger LessonViewer and therefore do not have access to the CD, please email us at support@webbssoft.biz for assistance.